

UPGRADING CARDACCESS 3000 TO V2.6

WI1692 7/08

UPGRADING CARDACCESS 3000 TO V2.6

Unlike previous versions of CardAccess, version 2.6 uses Microsoft Installer; therefore upgrading CardAccess to version 2.6 requires a slightly different procedure compared with previous upgrades.

SUPPORTED OPERATING SYSTEMS

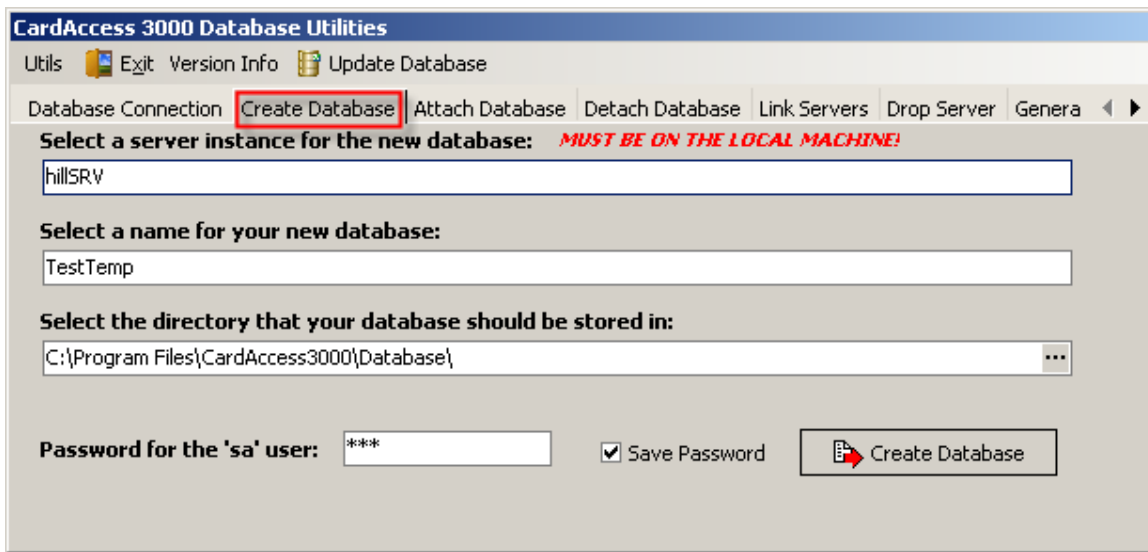
CardAccess Version 2.6 works only with **Windows XP Pro** or **Windows 2003 Server**, 32 bit versions. If you are currently running CardAccess in a Windows 2000 environment, you will need to upgrade the operating system. Also, **SQL 2000 and MSDE are no longer supported in Version 2.6**; although databases created with these database engines can still be used after upgrading to **Version 2.6** by using the "CardAccess 3000 Database Utility".

Supported Operating Systems that are currently using SQL2000 need to be upgraded to SQL 2005 before CardAccess Version 2.6 can be installed (see your Network Administrator). **CardAccess Version 2.6 will install SQL Express in the absence of any Database engine.**

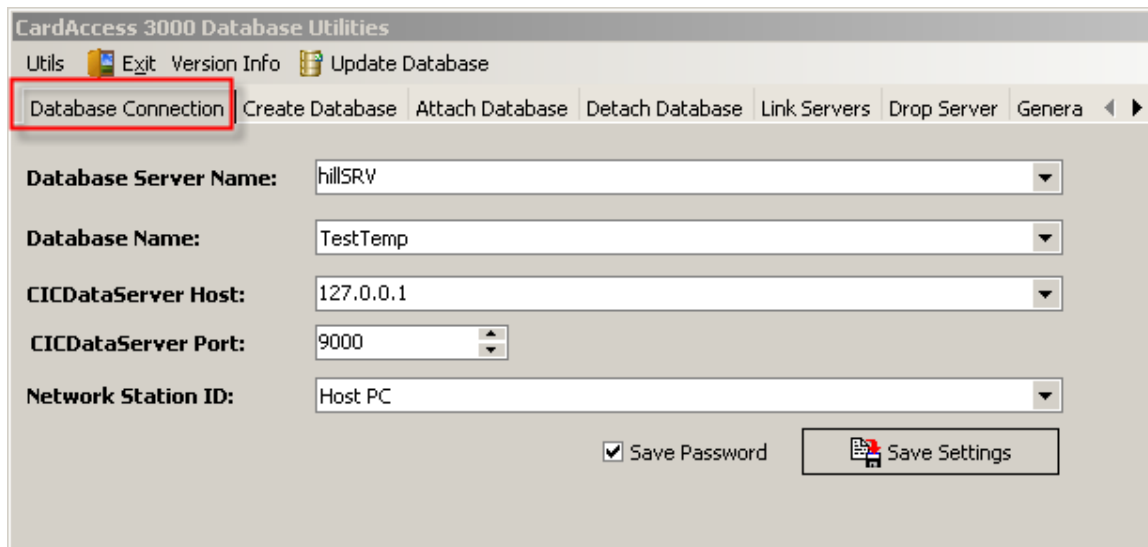
UPGRADING INSTRUCTIONS

1. Verify **OPERATING SYSTEM** is supported.
2. **DO NOT CONTINUE THE UPGRADE PROCESS UNLESS YOU POSSES A VALID 2.6 LICENSE.** Version 2.6 will not operate with any of the licenses obtained for earlier versions. Make certain that you have a valid 2.6 software or hardware license in your possession before proceeding.
3. **DETERMINE DATABASE ENGINE**
 - a. CardAccess (All Versions) with MSDE; perform Steps 4-15.
 - b. CardAccess (All Versions) with SQL 2000; perform Steps 4 -15.
 - c. CardAccess (All Versions) with SQL EXPRESS; go to Step 16.
 - d. CardAccess (All Versions) with SQL 2005; go to Step 16.
4. **Detach the CardAccess 3000 databases as follows:**
 - a. Run the *CardAccess Database Utilities* software and click on "Create Database" tab.
 - b. Create a "test" (temporary) database.

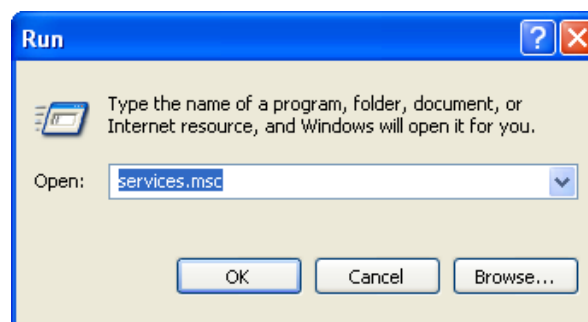
NOTE: Information furnished by Continental Instruments LLC is believed to be accurate and reliable. However, no responsibility is assumed by Continental Instruments LLC for its use; nor for any infringements of other rights of third parties which may result from its use. No license is granted by implications or otherwise under any patent or patent rights of Continental Instruments LLC.



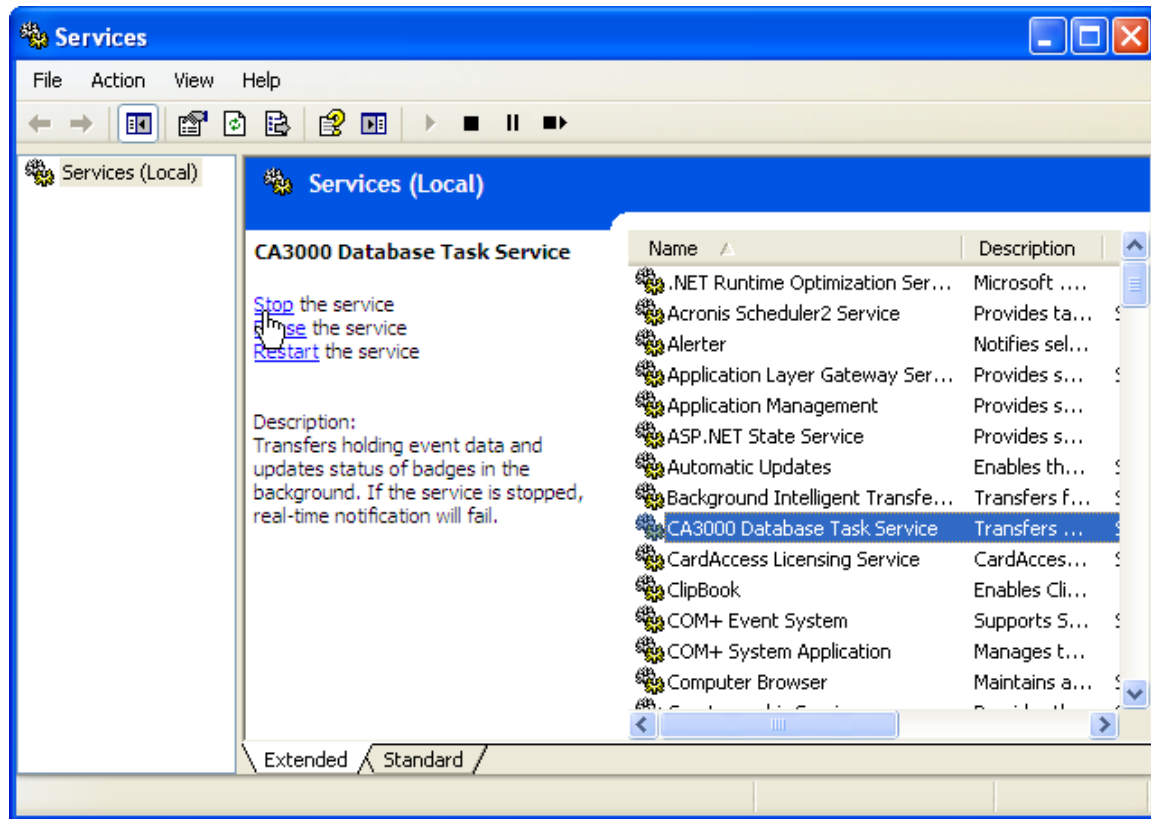
- c. Click on the *Database Connection* tab and click to select the "test" database created in the previous step.



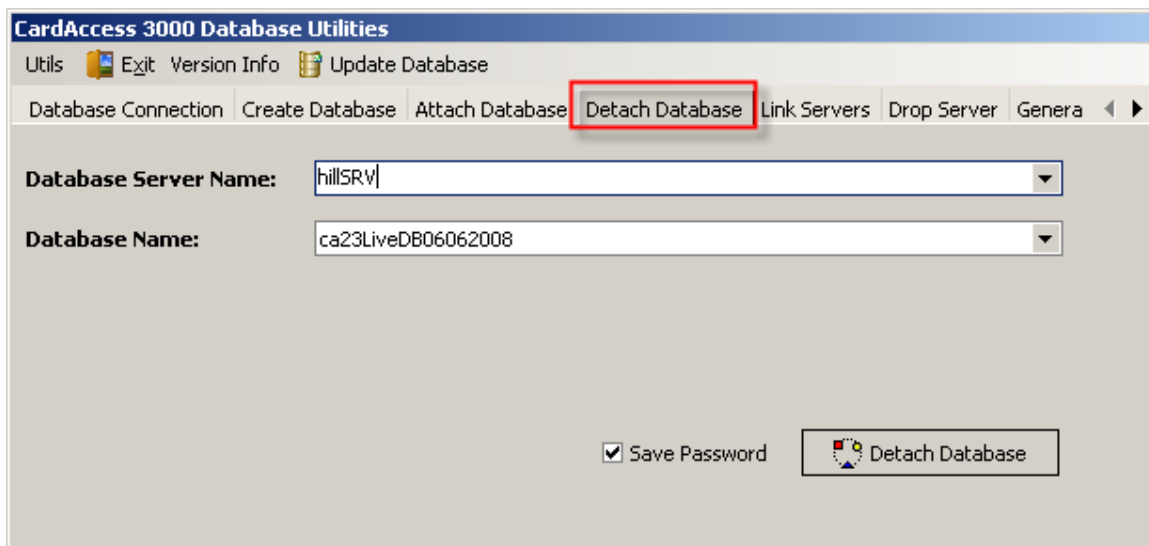
- d. Save the settings and exit the *CardAccess Database Utilities* software.
- e. Click **Start, Run** and type *services.msc* in the **Open** field and click **OK**.

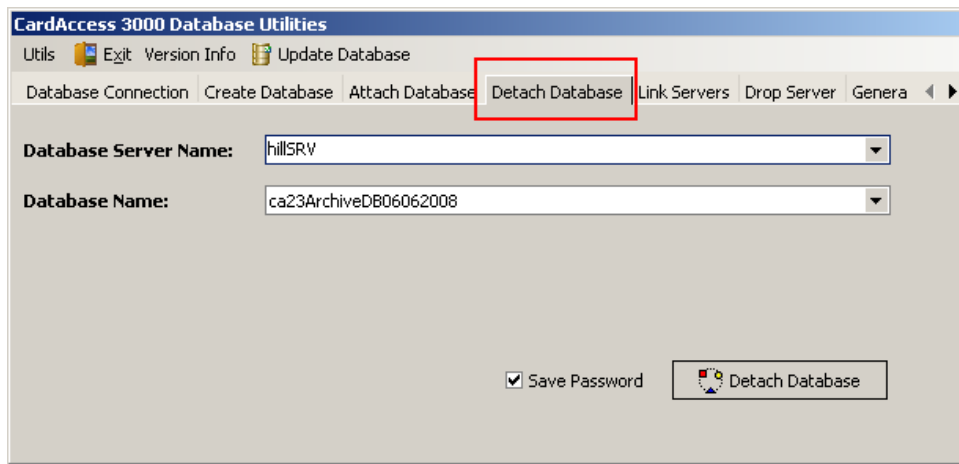


- f. In the **Services** window, stop the "CA3000 Database Task Service" and exit the Services window.

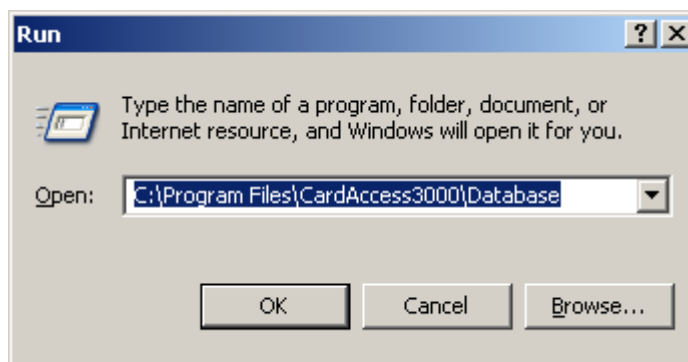


- g. Run the *CardAccess Database Utilities* software and click on "Detach Database" tab.
- h. Detach the *CardAccess Archive* database and detach the *CardAccess Live* database.

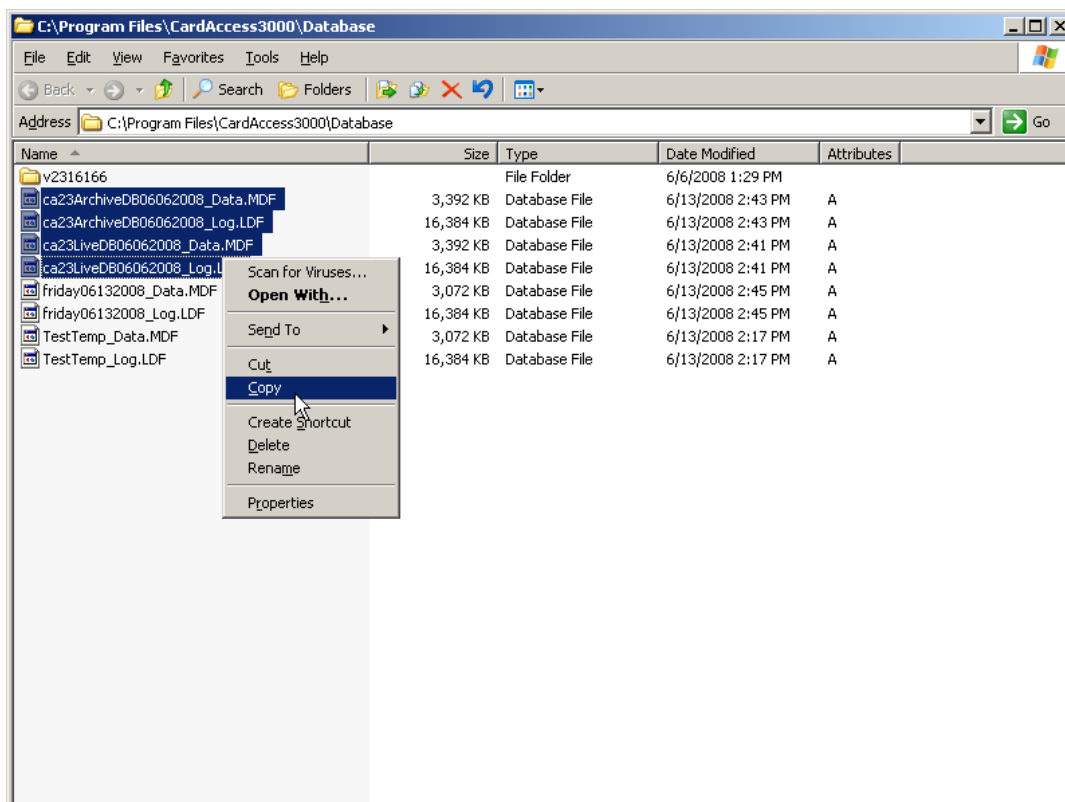




- i. Click **Start, Run** and type *C:\Program Files\CardAccess3000\Database* in the **Open** field. Click **OK**.



- j. **Copy** *CardAccess Archive* database and *CardAccess Live* database and place in a safe folder.



5. **Un-install the following programs:**

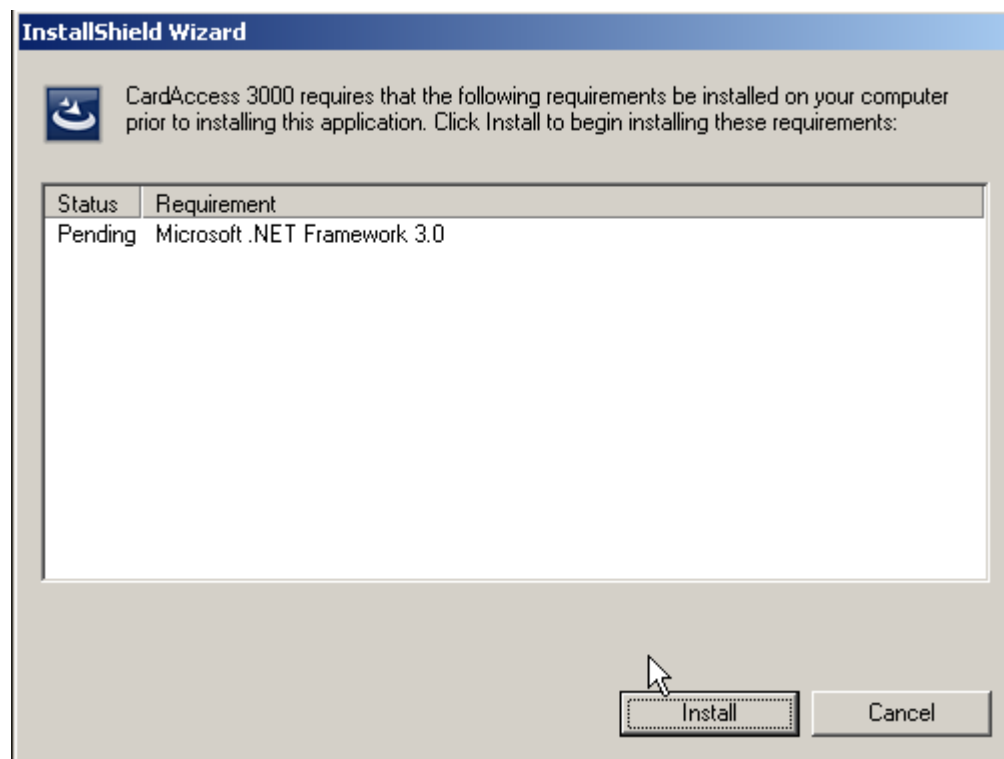
- a. Click **Start, Settings, Control Panel**, then double-click **Add or Remove Programs** to open.
- b. Un-install **CardAccess 3000**; answering all prompts as required.
- c. Un-install **Microsoft SQL Server Desktop Engine 2000 (MSDE)**.or **SQL 2000**.
- d. Reboot your computer.

6. **Delete the entire contents of the following directory:**

Click **Start, Run**, and type the following: %Temp%, and click **OK**.

7. To **upgrade** from an existing installation of CardAccess 3000 with **MSDE or SQL 2000** to version 2.6, perform the following:

- a. Shutdown the CardAccess 3000 Program.
- b. **Place the CardAccess 3000 version 2.6.CD into the CD-ROM drive.** The CardAccess 3000 *InstallShield Wizard* will automatically begin the installation process.
- c. If the *Installation Wizard* does not detect **Microsoft. NET Framework 3.0** on the target computer, the *Wizard* will prompt to install it automatically; the following Wizard message appears:



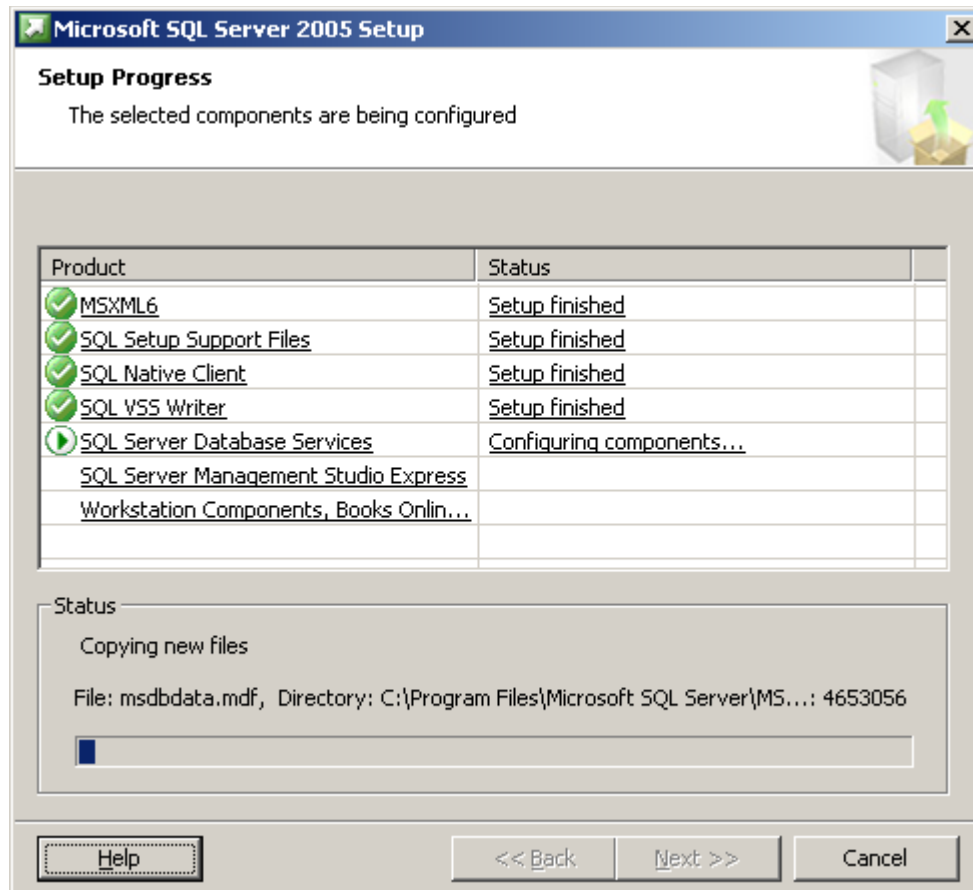
8. Install the CardAccess 3000 **Server** software.

- a. If **MSDE or SQL 2000** is detected after the installation of Microsoft.NET Framework 3.0, the following *Wizard* message appears.

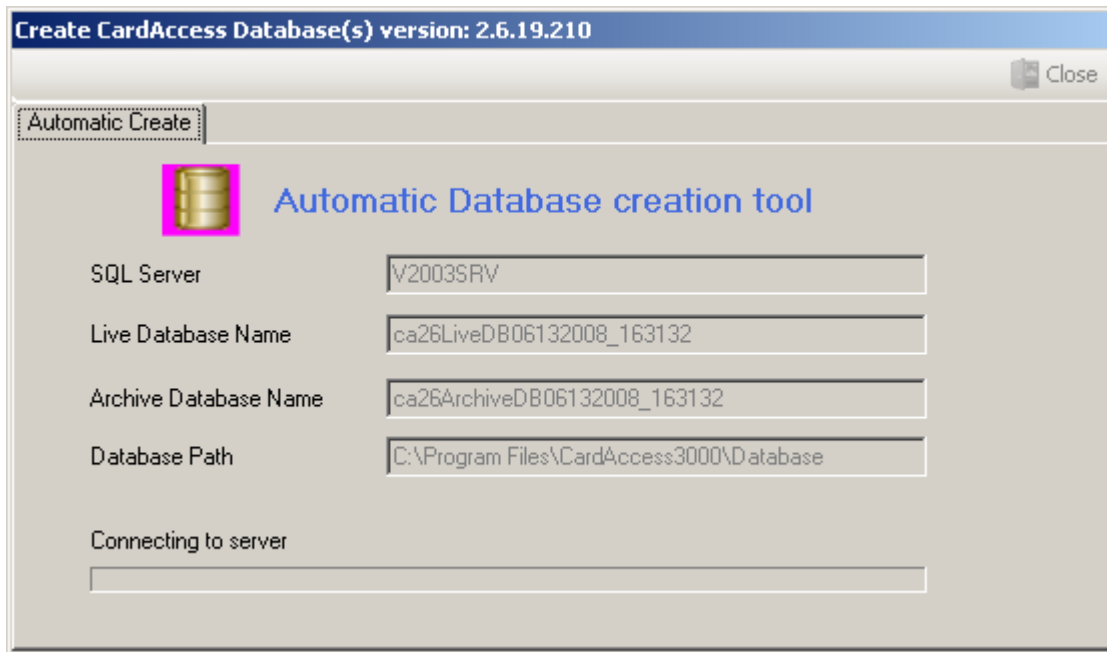


9. **Continue Installation of CardAccess 3000 version 2.6 as follows:**

- a. Select to install the CardAccess 3000 **Server** software.
- b. Click **Next** to prompts, as required.
- c. If prompted, insert CardAccess 3000 Disk 2.
 - *SQL Server 2005 Express Edition is installed.*



- *New Archive and Live Databases are created.*



- When the installation is complete, the Readme file opens.

d. Click **Next** to prompts, as required.

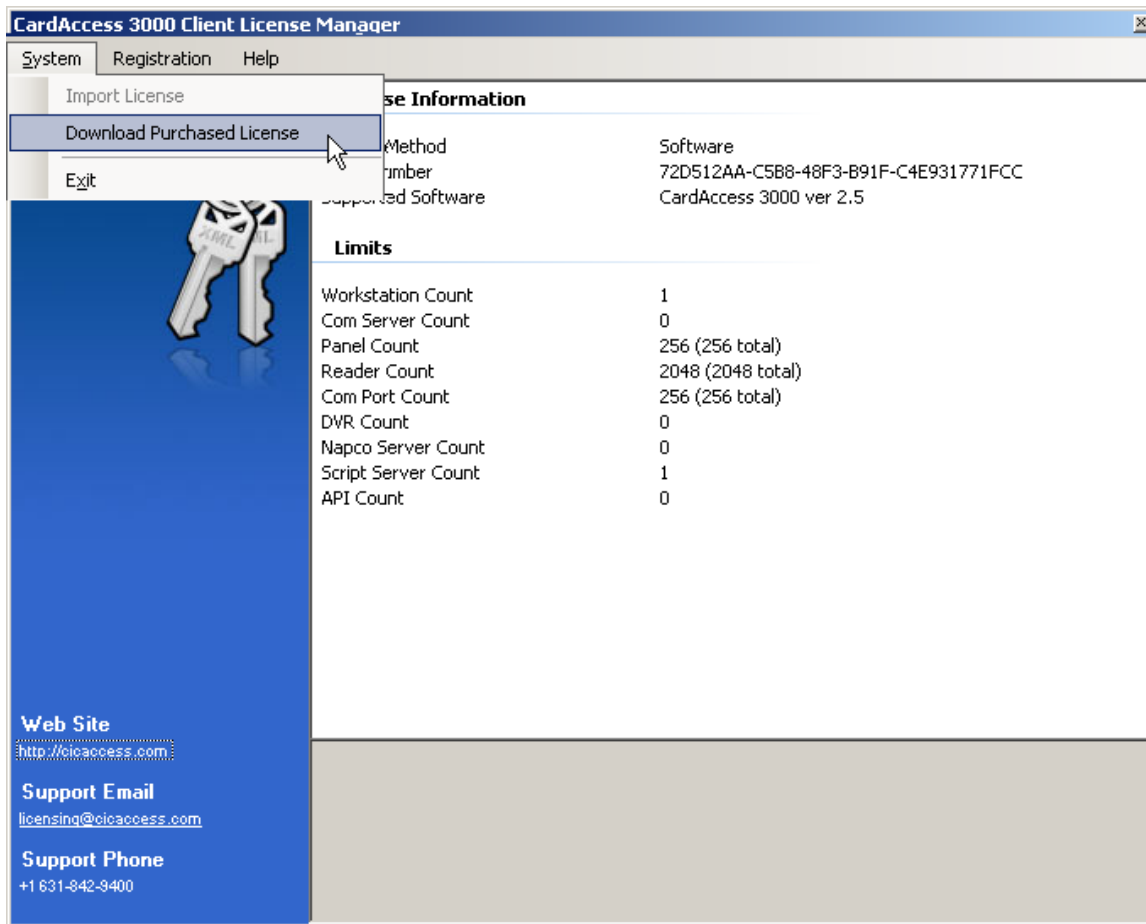
e. Click **Finish** and reboot your computer.

10. After rebooting, the **Client License Manager** screen appears displaying the license information for the Version 2.5 License. You WILL NOT be able to use this license in the current version. You MUST now use the Version 6 License that you received with your "upgrade" CD. You may also purchase, download and activate a NEW VERSION 6 license from this screen. When complete, exit the licensing software.

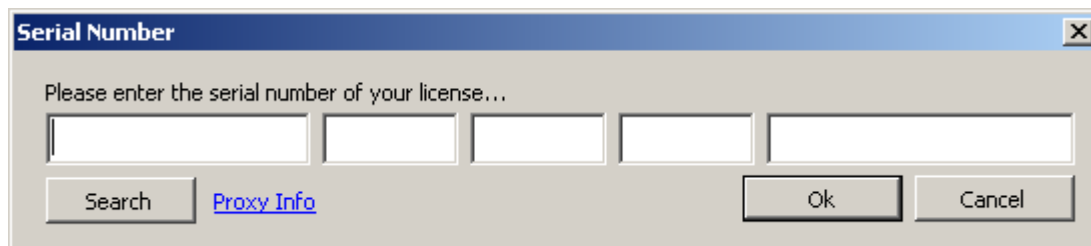
Perform the following steps to enter a NEW VERSION 6 License:

- If you will be using a **SOFTWARE license**, perform steps **10a – 10g**;
- If you will be using a **HARDWARE SECURITY KEY**, perform the following:
 1. Close the **CardAccess 3000 Client License Manager window**.
 2. Remove the **Version 2.5** Hardware Security Key.
 3. Insert the **NEW V2.6** Hardware Security Key.
 4. Reboot your Computer.
 5. Go to **Step 11**.

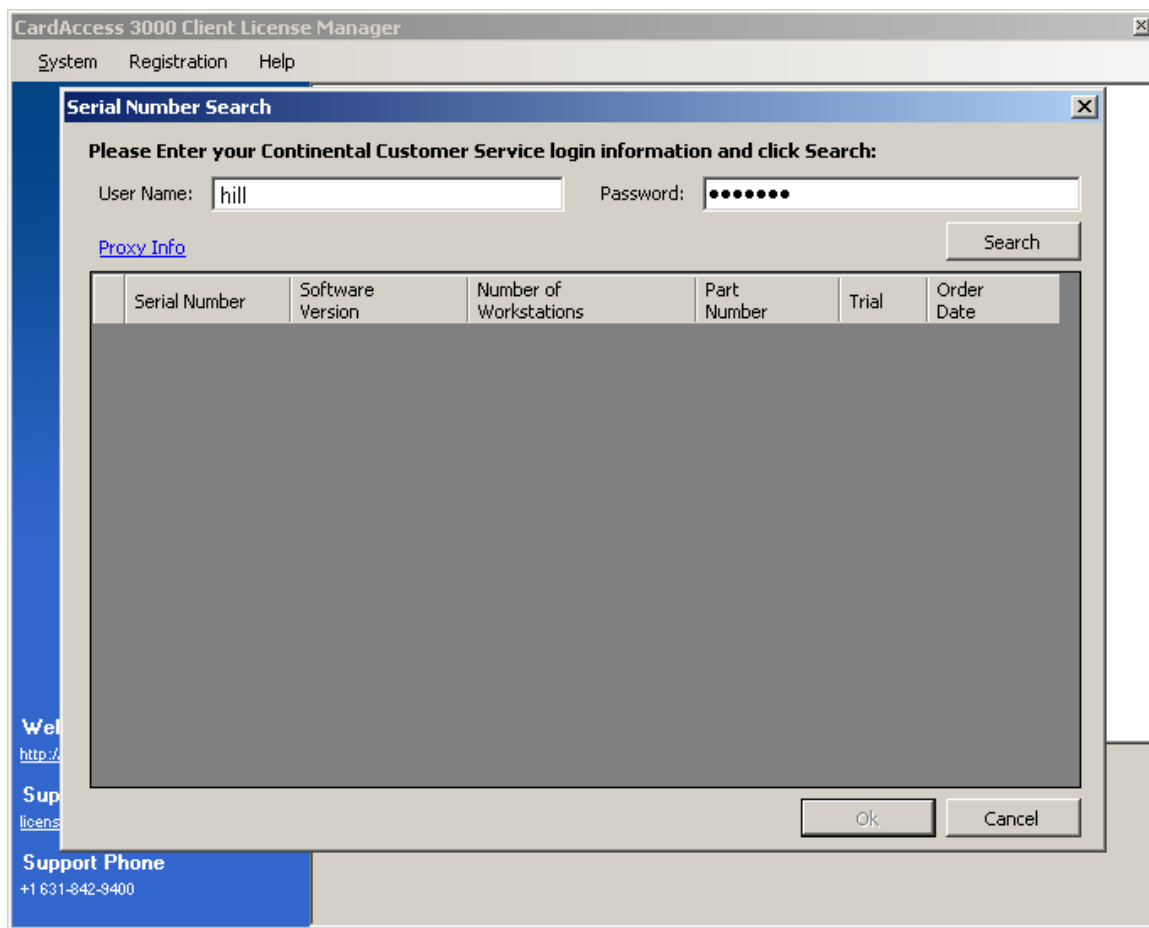
- a) From the CardAccess 3000 Client License Manager Screen click the "System" tab, then click "Download Purchased License".



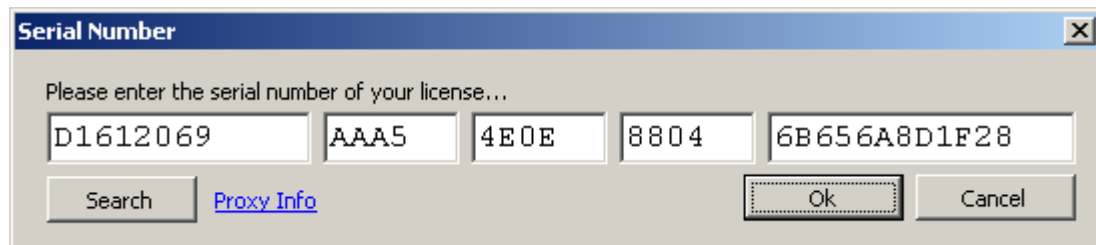
- b) The **Serial Number** screen appears. Enter the serial number you received with the Version 6 CD; then click **OK**.



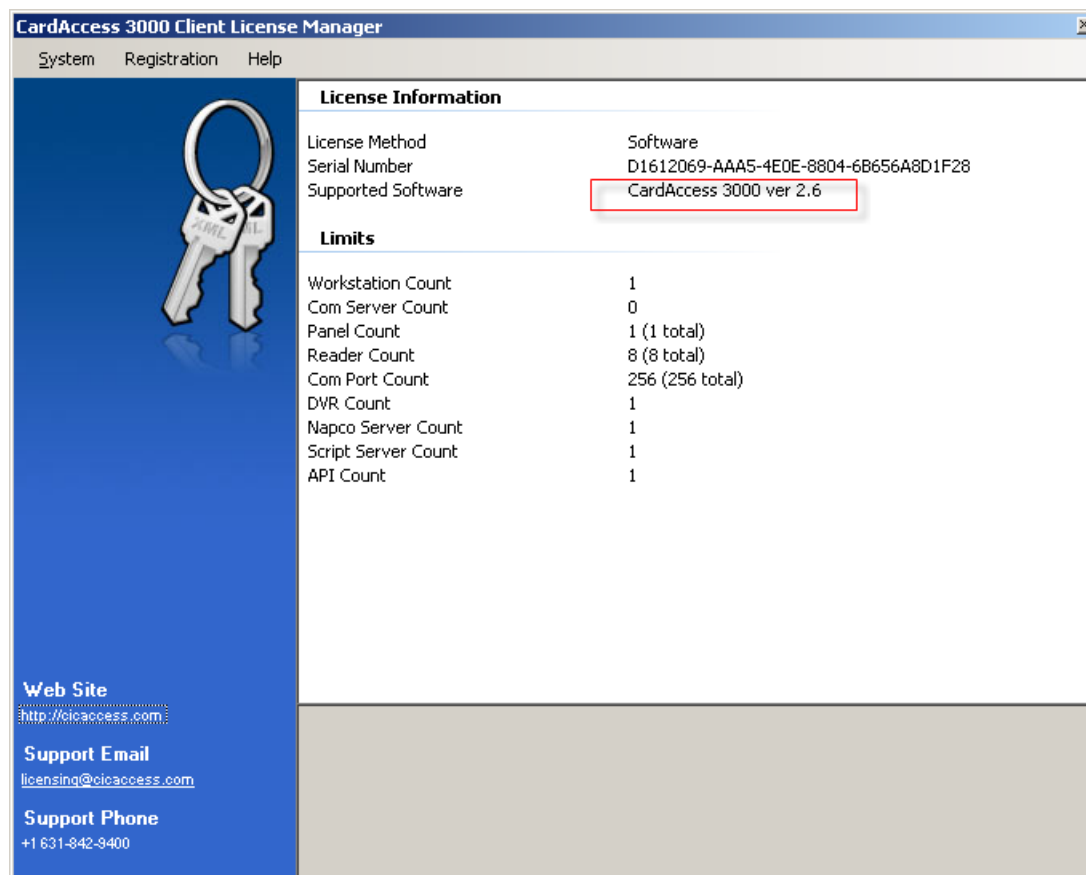
- c) If you have previously purchased a Serial Number click **Search**.
- d) The **Serial Number Search** screen appears. Enter User Name and Password then click **Search**.



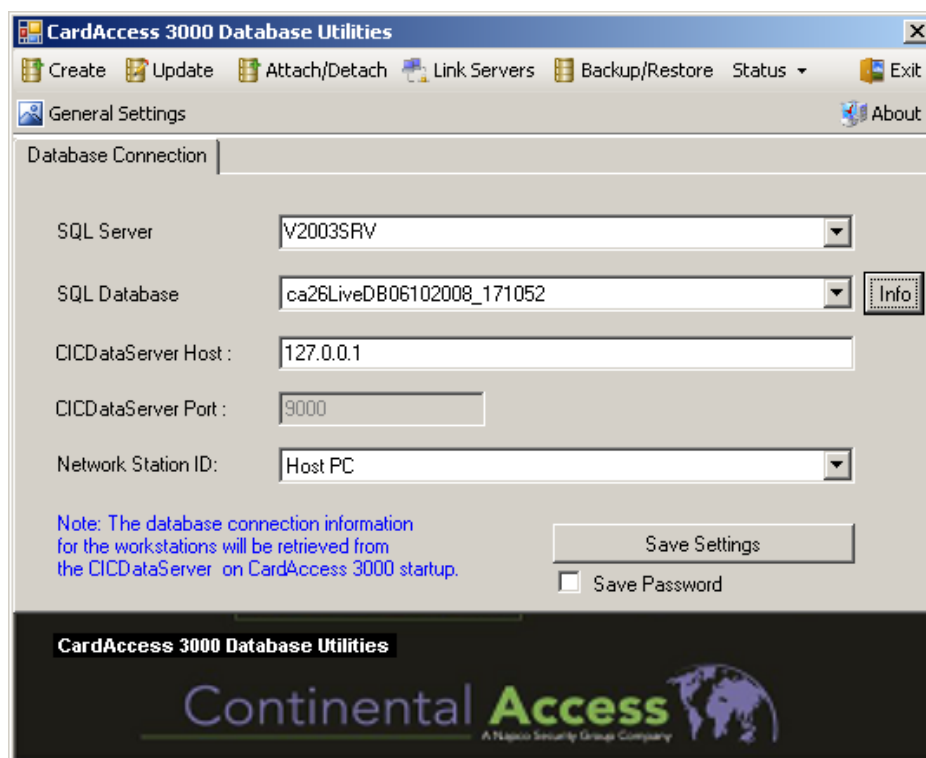
- e) The serial number is downloaded to the box. Click **OK** to continue.



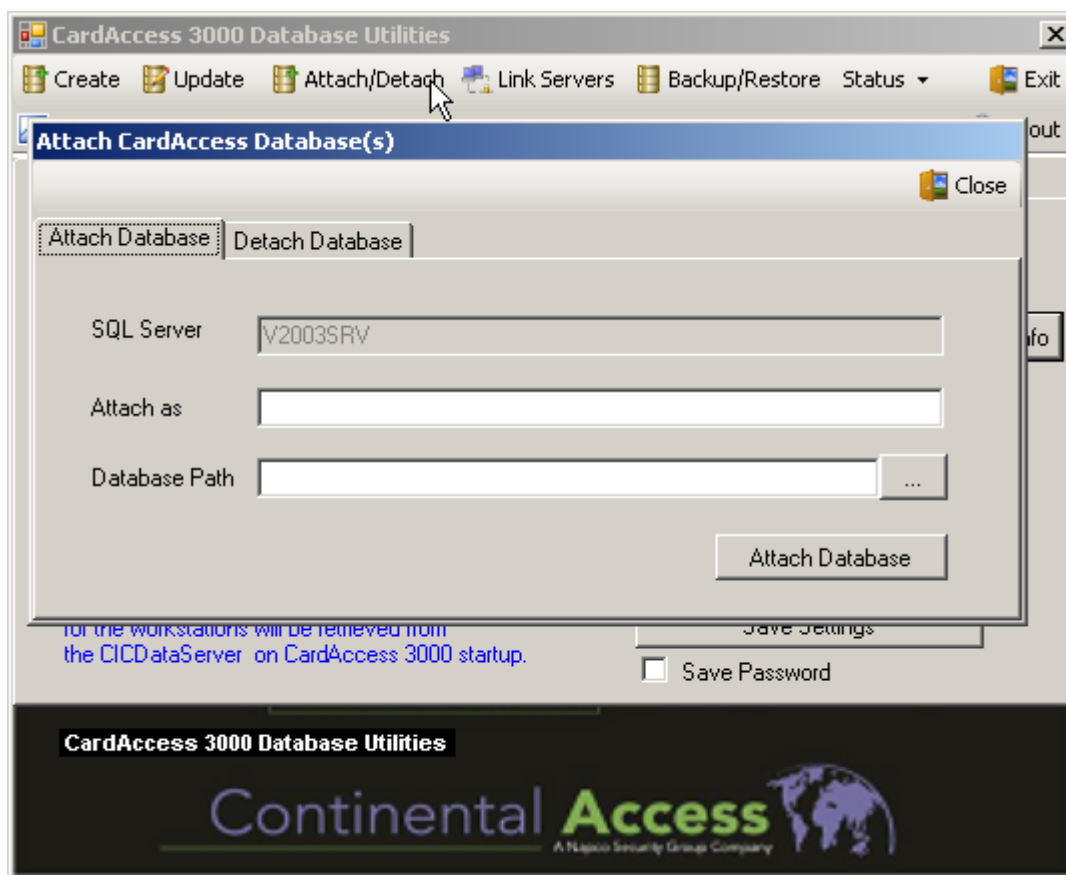
- f) Follow all prompts to "activate" the License.
- g) The **CardAccess Client Manager** screen now displays a **Version 6** license.



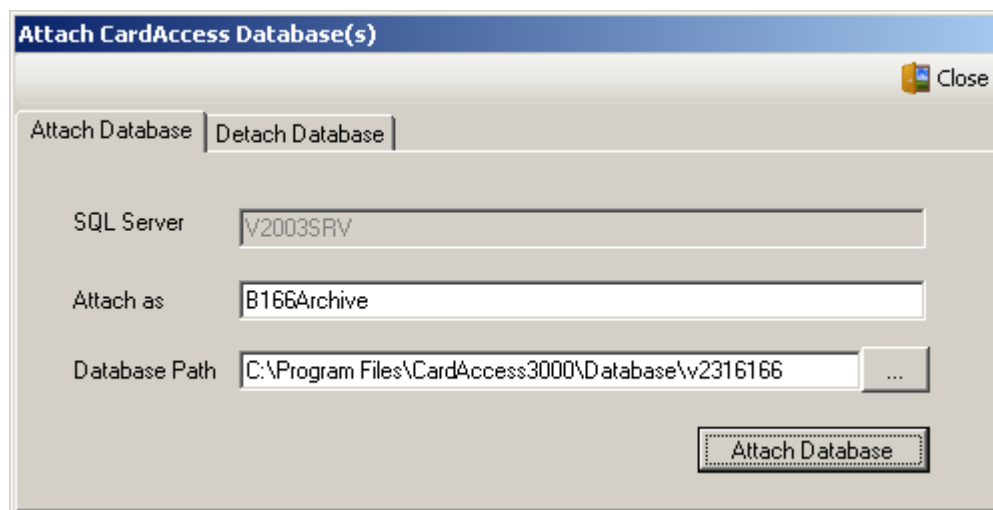
11. Launch **CardAccess 3000 software**. Ensure that the data created in version 2.5 are correctly updated and the archive is configured correctly.
12. Reattach your old databases and update them as follows:
 - a. Run the *CardAccess Database Utilities* software.



- b. Click *Attach / Detach* tab and the **Attach CardAccess Database(s)** screen appears.



- c. Attach your LIVE and ARCHIVE databases from previous versions.



- d. Close the **Attach CardAccess Database(s)** screen.

13. On the **CardAccess 3000 Database Utilities** screen, click the *Update* tab. The **Update CardAccess Database version** screen appears.

The screenshot shows the 'CardAccess 3000 Database Utilities' window. The 'Update' tab is selected in the top menu bar. Below the menu bar, the title bar reads 'Update CardAccess Database version:'. The main area contains the following fields and controls:

- Update Database** (tab)
- SQL Server**: V2003SRV
- Authentication**: ☐ SQL Authentication, ☒ Windows Authentication (default)
- SQL User Name**: [empty field]
- SQL Password**: [empty field]
- SQL Database**: B166Archive [ver. 166] (dropdown menu)
- Update Database** (button)
- Status Text**: [empty text area]

At the bottom of the window, there is a footer with the text 'CardAccess 3000 Database Utilities' and the 'Continental Access' logo, which includes the text 'A Napco Security Group Company'.

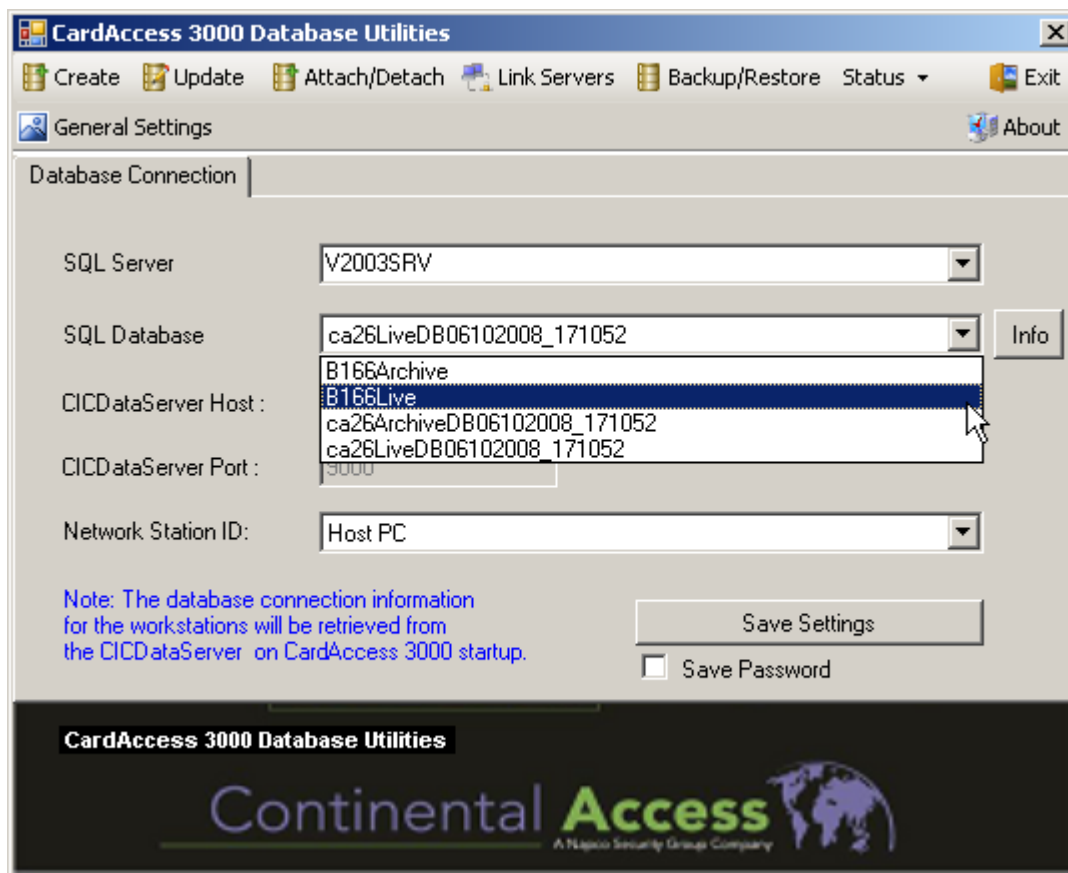
- a. Click the **SQL Database** pull-down menu and select the **Archive** database to update, then click **Update Database**. Click **Yes** to prompts, as required. After the update process completes, click **OK**.

This screenshot is a close-up of the 'SQL Database' dropdown menu from the previous window. The menu is open, showing the following options:

- B166Archive [ver. 166] (highlighted)
- B166Live [ver. 166]
- ca26ArchiveDB06102008_171052 [ver. 210]
- ca26LiveDB06102008_171052 [ver. 210]

The 'Status Text' field is visible below the dropdown menu.

14. Click the **SQL Database** pull-down menu again and select the **Live** database to update; then click **Update Database**. Click **Yes** to prompts, as required. After the update process completes, click **OK**, and then click **Close** to exit.



15. Launch the CardAccess 3000 software and verify operation and archive configuration.

UPGRADING FROM CARDACCESS V2.52 TO V2.6

16. To **upgrade** from an existing installation of CardAccess 3000 with **SQL Express 2005/SQL Server 2005** to version 2.6, perform the following:

- a. Shutdown the CardAccess 3000 Program.
- b. Perform Step 4 (a – j), then go back to Step 17.

17. **Un-install the following programs:**

- a. Click **Start, Settings, Control Panel**, then double-click **Add or Remove Programs**.
- b. Un-install CardAccess 3000, answering all prompts as required.
- c. Reboot your computer.

18. **Delete the entire contents of the following directory:**

- Click **Start, Run** and type the following: %Temp%.

19. **Go back** and perform Steps 7b through 15 to install **CardAccess V2.6**.

NOTES

NOTES

NOTES